

The Children's Cancer Center of Lebanon CCCL

Miguel R. Abboud, M.D.
Medical Director



'No Child Should Die In the Dawn of Life' Danny Thomas

- › Founded St Jude Children's Research Hospital
- › Now leading center in the world for children's cancer and other catastrophic illnesses

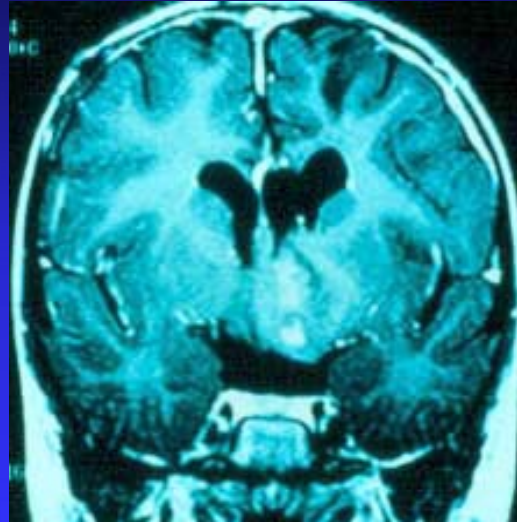
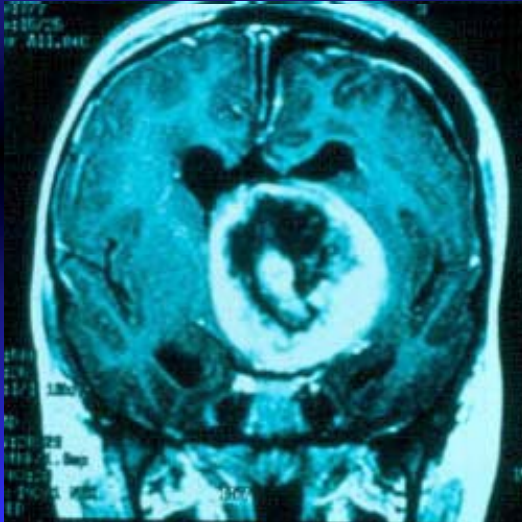
D2

INTRODUCTORY
WORKSHOPS II

Children's Cancer

- › 80% of children with cancer will be cured of their disease
- › In the U.S. the prevalence of childhood cancer survivors in the adult population is 1 in 900 persons 19-45 years of age
- › This will increase to 1 in 250 persons by 2010

Brain Tumors: Low-Grade Gliomas Often Respond to Chemotherapy



Cancer Treatment

- › Diagnosis
- › Chemotherapy
- › Radiation
- › Surgery
- › Supportive care
- › Long term follow up

The Children's Cancer Center of Lebanon CCCL



Population: 3,404,986
27.6% < 15 years

D2

INTRODUCTORY
WORKSHOPS II



Problem

- › Provide state of the art care to children and adolescents with cancer in Lebanon
- › Population: 3, 404, 986
- › Children below 15 921,739
- › Children 15-19 314,525
- › Incidence of cancer $140/1,000,000 <15 = 130$
 $206/1,000,000 15-19 = 60$

Existing Conditions

- › Good centers but none exclusively dedicated to cancer and blood diseases in children and adolescents
- › Pediatric oncologists work part time
- › Adolescents and children treated by medical oncologists without pediatric training
- › Many patients referred abroad

Proposed Solution

- › St Jude Children's Research Hospital would start an affiliated program with the American Univ of Beirut Medical Center
- › Financial help would come from the American Lebanese Syrian Associated Charities ALSAC
- › The Center would cover the care of 50 new patients a year
- › Move towards financial independence
- › The Center would be focus for a pediatric oncology group in Lebanon

Organization

- › Independent center
- › Within AUBMC
- › Own Board of Trustees
- › Financial Support
 - ¥ ALSAC USA
 - ¥ Third party payers-Ministry of Health
 - ¥ Fund raising

D2

INTRODUCTORY
WORKSHOPS II

Mission

- › Clinical Care
- › Education
- › Research
- › Advocacy

Clinical Care

- › Space
- › Personnel
- › Child and Family friendly environment

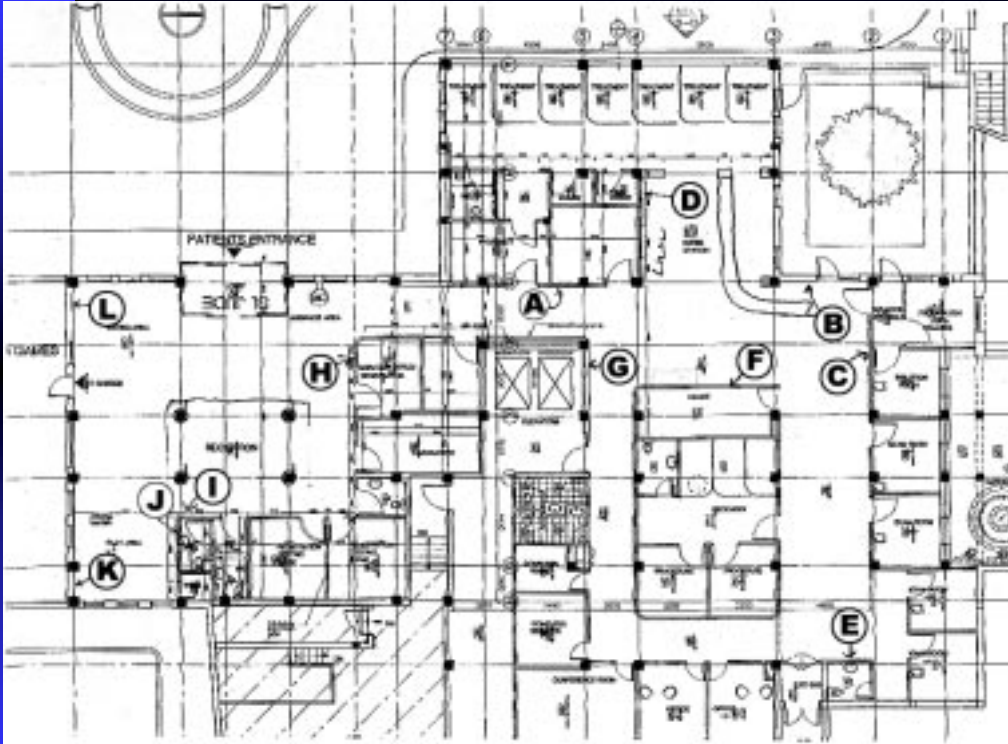
Space

- › In relation to the environment children need
 - ¥ To Move about in space
 - ¥ To feel Comfortable
 - ¥ To feel Competent
 - ¥ To feel in Control
- › Space that can be personalized
- › Allow involvement of parents

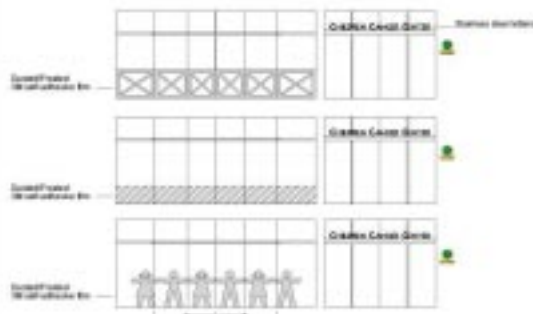


D2

INTRODUCTORY
WORKSHOPS II



St. Jude ENTRANCE



The Children's Cancer Center of Lebanon CCCL



D2

INTRODUCTORY
WORKSHOPS II







D2

INTRODUCTORY
WORKSHOPS II





Activities in Waiting Areas

- › Quiet activities: reading
- › Large motor activities
- › Craft activities
- › Dramatic play
- › Games: Board games, computer games